

KSR 50 VT

The first servo-conventional high-speed radial drill press



See this machine
in action on
YouTube



- Unique operating concept
- Servomotor-driven quill feed
- Large touchscreen
- Rigid design and powerful performance

- Table, column, male die and gear head are made of thick-walled high-grade cast-iron and the entire machine structure features high-quality components and precision machined surfaces
- The large work area can be expanded by mounting optional swivel and angle tables for a wide variety of clamping and machining options



The high-resolution touchscreen features a scratch-resistant surface. Matching rpm and feed speeds for each drill can be recalled from a database and automatically applied.

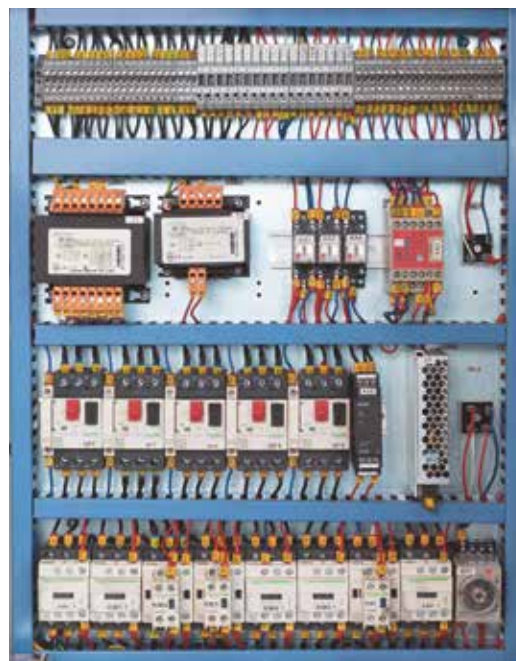
- The male die features a low-maintenance, very rigid design and runs smoothly in two large linear roller guideways, allowing exact positioning with minimal effort
- The entire machine is extremely smooth running for effortless operation in a production environment
- Column and male die are equipped with hydraulic clamping fixtures
- Main spindle drive with 2 gear steps, infinitely variable speed in each gear step
- For angular bores, the drill head can be rotated 45° in either direction
- A central lubrication system simplifies maintenance

Electronically controlled servo quill feed

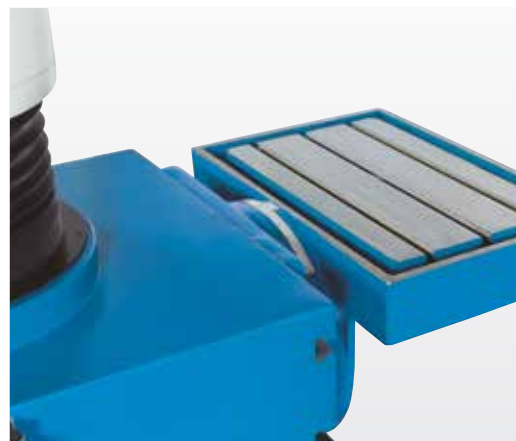
- A servo-motor provides infinitely variable control of the quill feed
- The depth stop is set electronically with a positioning accuracy of +/- 0.004"

Improved functionality and improved layout of the large touchscreen display

- All machine functions are controlled and displayed on the touchscreen
- Measuring units for input and display can be selected by the operator (mm or inch)
- In Thread Cutting Mode, the quill will automatically reverse direction upon reaching the selected thread depth
- Various alarm screens warn the operator in case of operational errors and display information on the operational state
- The control software also provides recommendations for rpm and feed in relation to the desired drill size
- The high-performance coolant system is activated at the touchscreen



Premium electric components



Swivel and angle tables for a wide variety of clamping options

Specifications

KSR 50 VT

Working Area

Drilling capacity	in	1.97
Tapping capacity, steel		M 32
Throat	in	25
Spindle nose-to-table surface distance	in	30
Head swivel range		± 90°
Column diameter	in	9
Table set up area	in	47x20
Column stroke	in	16
Quill stroke	in	8

Travels

Upper beam travel	in	23
-------------------	----	----

Headstock

Spindle mount	MT	4
Spindle speed (infinitely variable)	rpm	50 - 2,000

Feed

Feeds	in/min	(6) 0.04 - 118.11
-------	--------	-------------------

Drive Capacity

Motor rating main drive	Hp	4
Motor rating height adjustment	Hp	2
Motor rating feed	Hp	1.7
Motor rating hydraulic pump	Hp	0.5
Motor rating coolant pump	Hp	0.1

Measures and Weights

Overall dimensions (length x width x height)	in	68x48x89
Weight	lbs	6,028
Part No.		162365

Standard Equipment

touch screen monitor, additional setup areas at the side and rear, cube table, swiveling horizontal table, work lamp, coolant system, tapping unit, reducing sleeves, operating tools, operator manual

Options

Part No.

• Set of collets Ø0.2-0.6"	253672
• Compound Sliding Tables 25" x 8"	253673

For additional options for this machine, visit our website and search for KSR 50 VT (Product Search)