


# KSR 50 VT

The first servo-conventional high-speed radial drill press



See this Machine  
in action on  
YouTube 



- Unique operating concept
- Servomotor-driven quill feed
- Large touchscreen
- Rigid design and powerful performance

- Table, column, male die and gear head are made of thick-walled high-grade cast-iron and the entire machine structure features high-quality components and precision machined surfaces
- The large work area can be expanded by mounting optional swivel and angle tables for a wide variety of clamping and machining options



The high-resolution touchscreen features a scratch-resistant surface. Matching rpm and feed speeds for each drill can be recalled from a database and automatically applied.

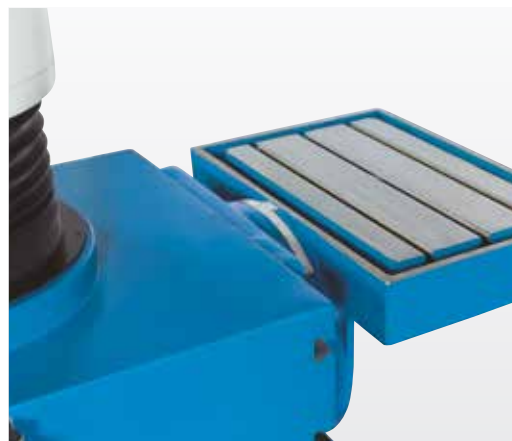
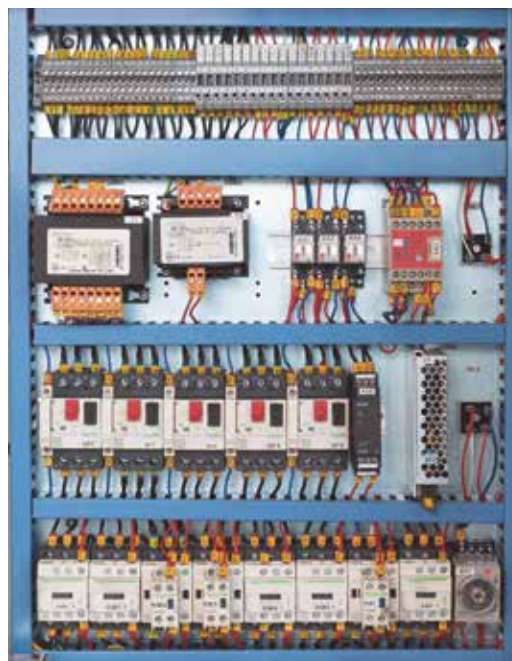
- The male die features a low-maintenance, very rigid design and runs smoothly in two large linear roller guideways, allowing exact positioning with minimal effort
- The entire machine is extremely smooth running for effortless operation in a production environment
- Column and male die are equipped with hydraulic clamping fixtures
- Main spindle drive with 2 gear steps, infinitely variable speed in each gear step
- For angular bores, the drill head can be rotated 45° in either direction
- A central lubrication system simplifies maintenance

### Electronically controlled servo quill feed

- A servo-motor provides infinitely variable control of the quill feed
- The depth stop is set electronically with a positioning accuracy of +/- 0.1 mm

### Improved functionality and improved layout of the large touchscreen display

- All machine functions are controlled and displayed on the touchscreen
- Measuring units for input and display can be selected by the operator (mm or inch)
- In Thread Cutting Mode, the quill will automatically reverse direction upon reaching the selected thread depth
- Various alarm screens warn the operator in case of operational errors and display information on the operational state
- The control software also provides recommendations for rpm and feed in relation to the desired drill size
- The high-performance coolant system is activated at the touchscreen



## Specifications

## KSR 50 VT

### Working area

Drilling capacity	mm	50
Tapping capacity, steel		M 32
Throat	mm	640
Spindle nose-to-table surface distance	mm	760
Head swivel range		± 90°
Column diameter	mm	220
Table set up area	mm	1.200x505
Column stroke	mm	400
Quill stroke	mm	200

### Travels

Upper beam travel	mm	590
-------------------	----	-----

### Headstock

Spindle mount	MT	4
Spindle speed (infinitely variable)	1/min	50 - 2.000

### Feed

Feeds	mm/min	(6) 1 - 3.000
-------	--------	---------------

### Drive capacity

Motor rating main drive	kW	3
Motor rating height adjustment	kW	1,5
Motor rating feed	kW	1,26
Motor rating hydraulic pump	kW	0,37
Motor rating coolant pump	kW	0,085

### Measures and weights

Overall dimensions (length x width x height)	m	1,72x1,2x2,25
Weight	kg	2.740
Part No.		162365

## Standard Equipment

touch screen monitor, additional setup areas at the side and rear, cube table, swivelling horizontal table, work lamp, coolant system, tapping unit, reducing sleeves, operating tools, operator manual

## Options

## Part No.

• Set of collets Ø6-16 mm	253672
• Compound Sliding Tables 640 x 205 mm	253673

For additional options for this machine, visit our website and search for KSR 50 VT (Product Search)